



# How to Create Smart Reports without MDX

Ilze Leite-Apine

How can we do that  
easier?



**Ilze Leite-Apine**



**Remote  
Community Days  
May 14, 2020**

---

**Know the tools**

**Let's create!**

**Recap**

**Knowing the tools**



**If all you have is  
a hammer,  
everything  
looks like a nail**

# Know what is in the toolbox

## **eazyBI is a BI tool**

Explore BI options: drilling, combining, exploring

## **Measures & Dimensions**

Know the building blocks you already have

## **Cool features**

Added calculations, Top and Bottom N, drilling into a measure

**Let's create!**

## **I WANT TO SEE...**

---

**Project progress based on resolved issues and logged time and some trends...**

**... and how logged hours are split by users...**

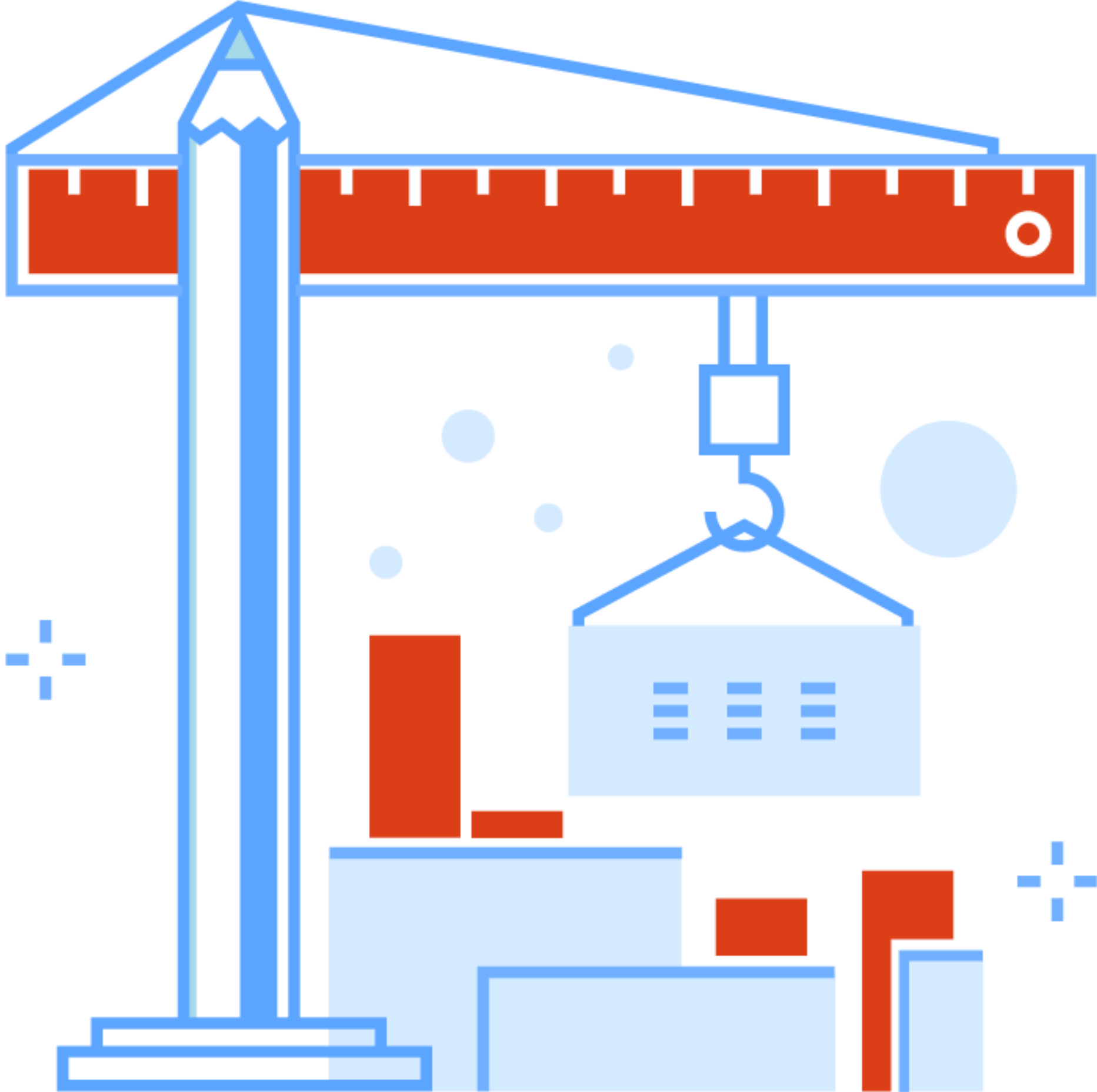
**...and a list of issues where we have spent the most time...**

**...and an overview of typical resolution times.**

**And to see it all in one glance!**



Let's create!



## DEMO DESCRIPTION

---

1. Resolved issues and hours spent with trends  
(search option in Measures, the same dimension in Rows and Pages, Added calculations - trend and cumulative sum)
2. Hours spent split by users  
(Drill into measures, default member in bar chart for total value, Added calculations - previous period changes)
3. List of Top10 issues by logged hours  
(Filter by time in columns, Top N function, Total)
4. Issues by resolution intervals  
(Interval dimension, Top %, All others)
5. Dashboard  
(Common Page selection, drilling into detailed view from dashboards )

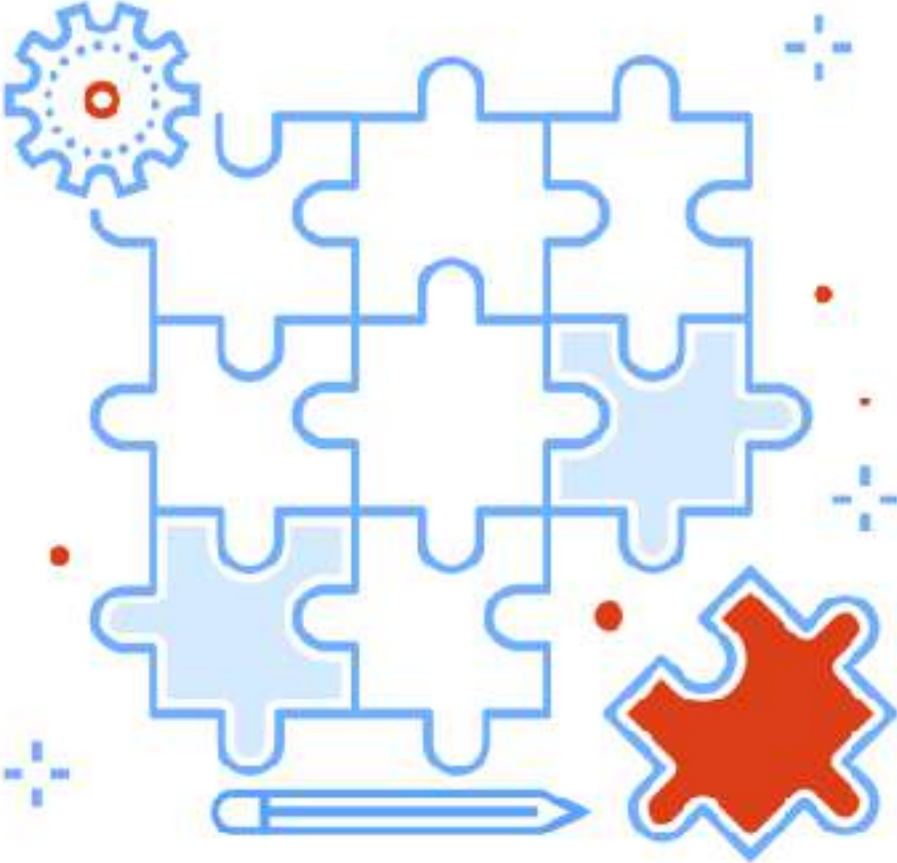
**What have we learned?**

# RECAP

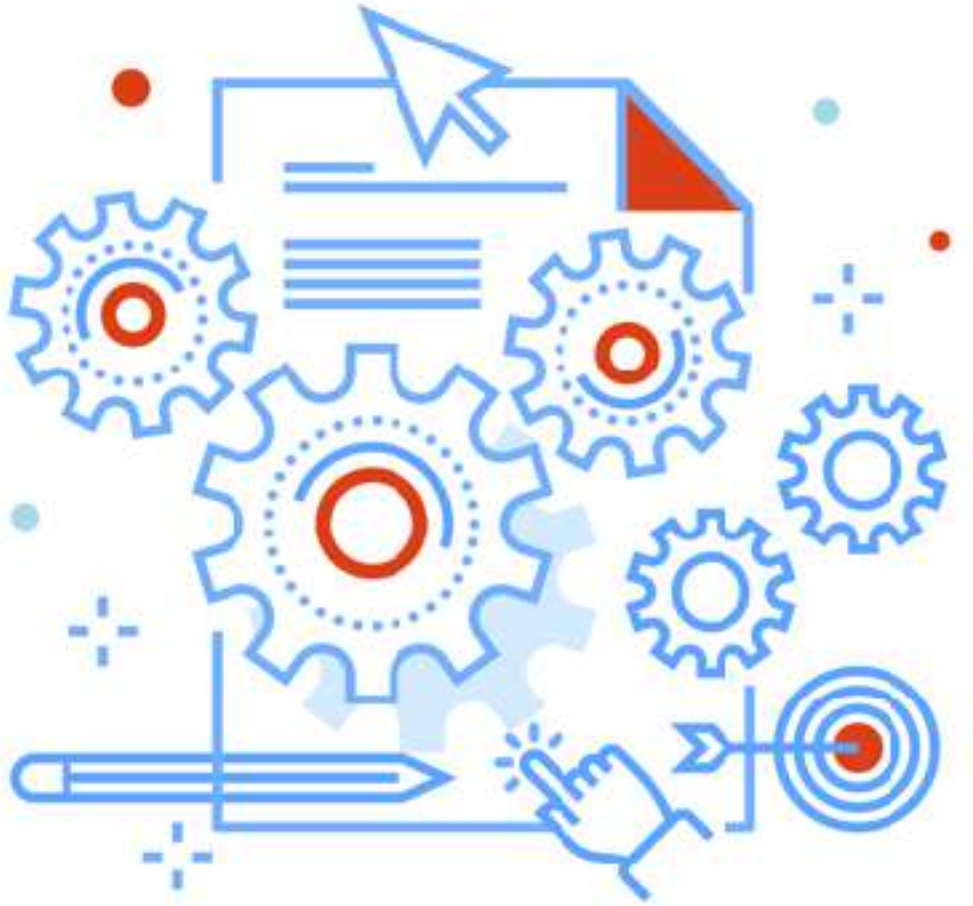
---



BI options



Measures & Dimension



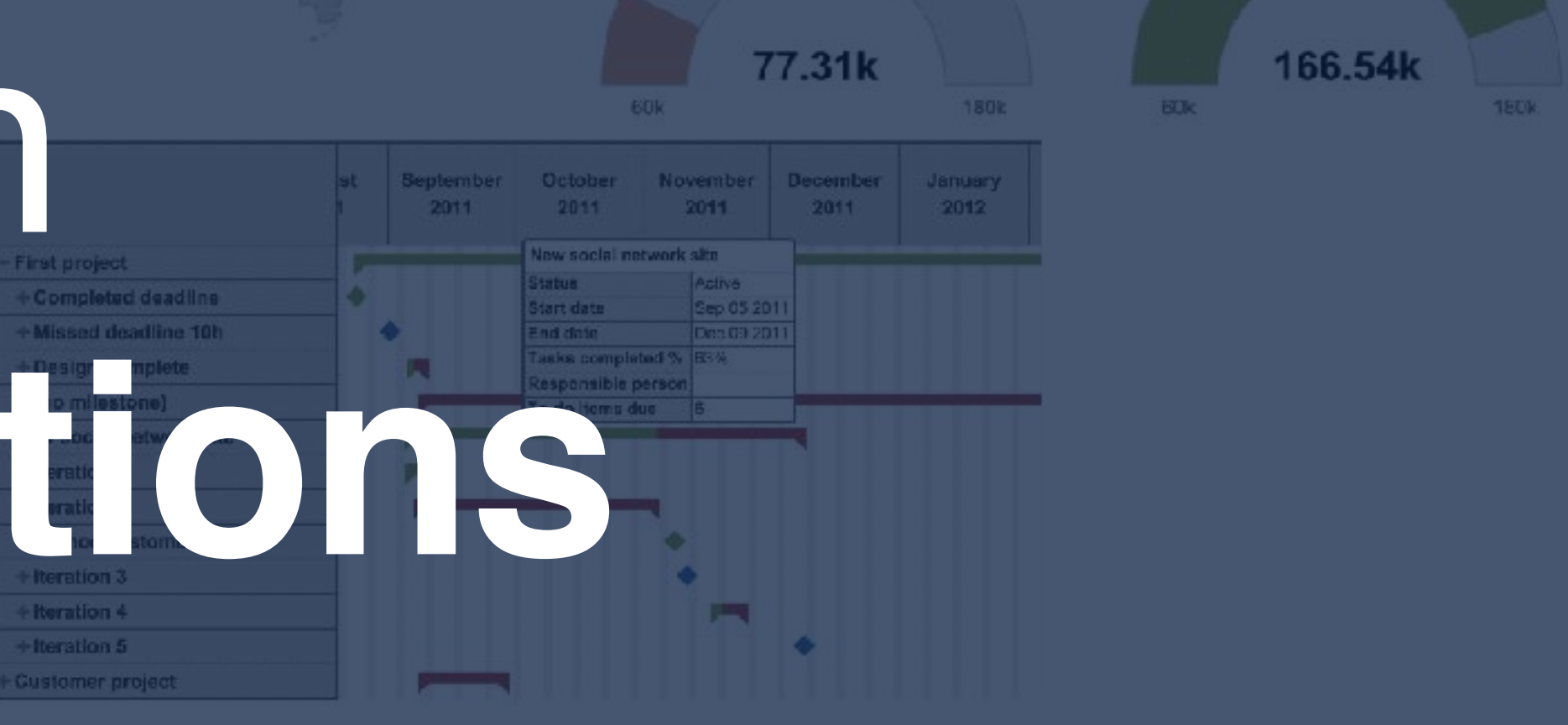
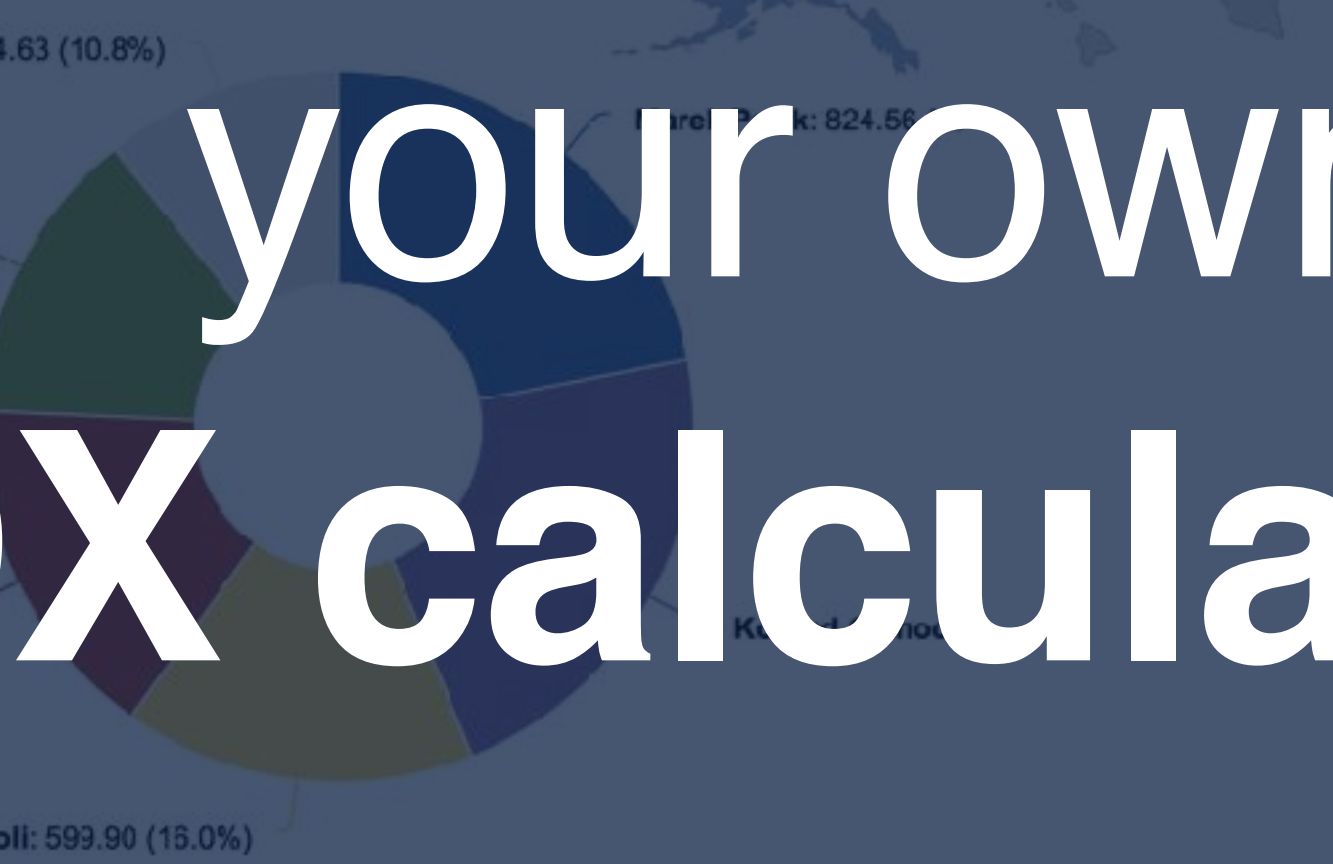
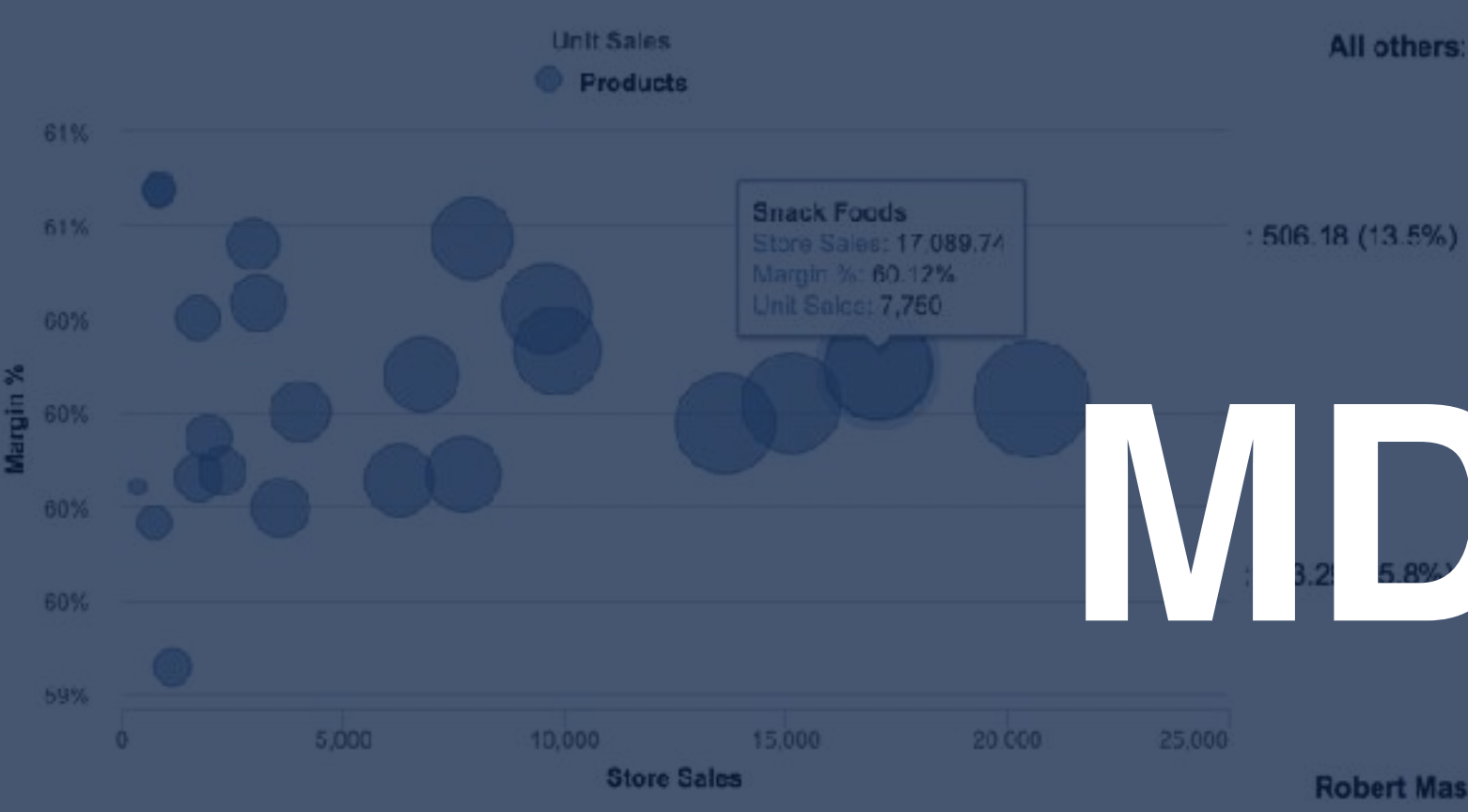
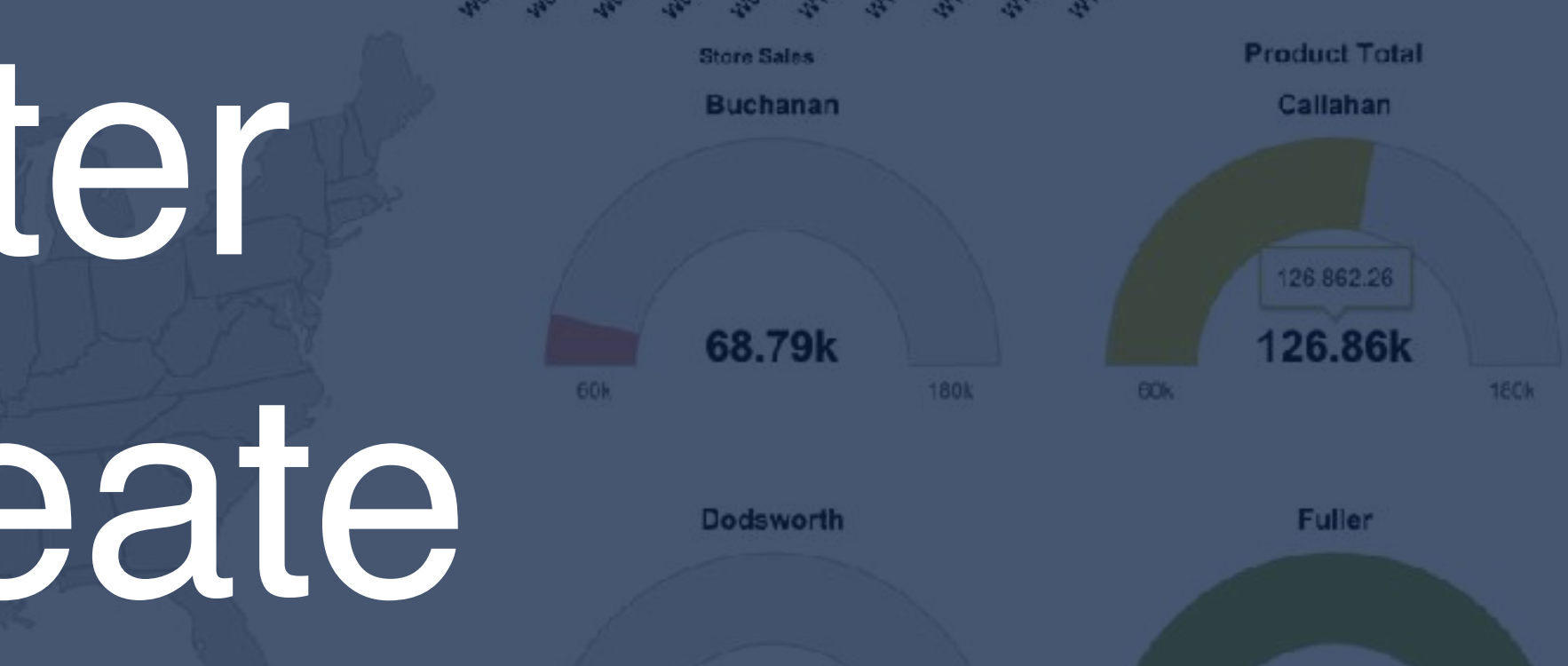
Cool features

By exploring how  
easyBI works

you can better  
prepare to create

your own  
MDX calculations

	Store Sales	Store Cost	Unit	Average
- All Customers	136,626.35	55,752,240		
- USA	136,626.35	55,752,240		
- CA	36,175.20	14,431,085		
- OR	40,170.29	16,081,073		
+ Albany	4,491.26	1,752,817		
+ Beaverton	2,407.97	950,353		
+ Corvallis	5,695.13	2,281,248		
+ Lake Oswego	2,262.56	907,643	1,102	6.41
+ Lebanon	5,934.62	2,390,872	2,828	6.49
+ Milwaukie	2,892.32	1,155,602	1,345	6.92
+ Oregon City	2,324.82	923,875	1,113	6.55
+ Portland	2,122.12	847,518	1,001	6.55
+ Salem	4,251.81	1,697,603	2,104	6.28
+ W. Linn	2,161.61	871,048	1,041	6.59



An aerial view of a city at night, with a gradient overlay transitioning from red on the left to blue on the right. The city lights are visible through the semi-transparent overlay.

**Thank you!**