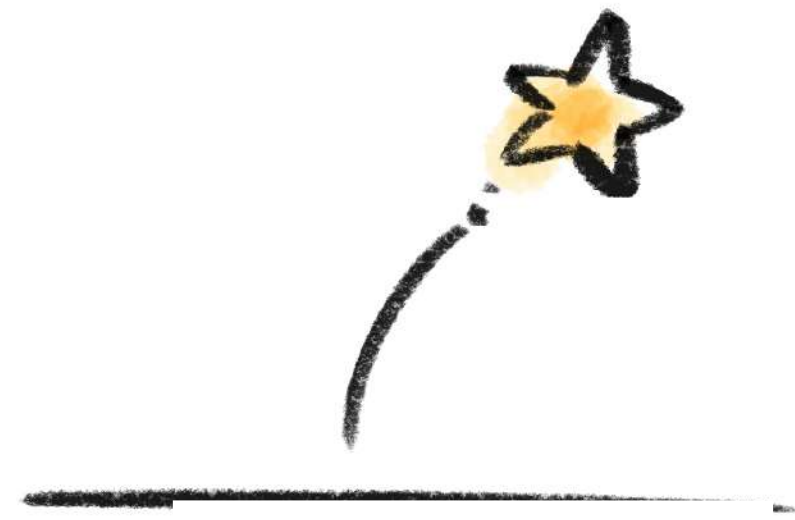




# Paint With Your Data in easyBI

Gerda Zandersone





---

**Inspiration**

**Tools in eazyBI**

**Use cases  
for Jira**

**Use cases  
for Confluence**

# Inspiration



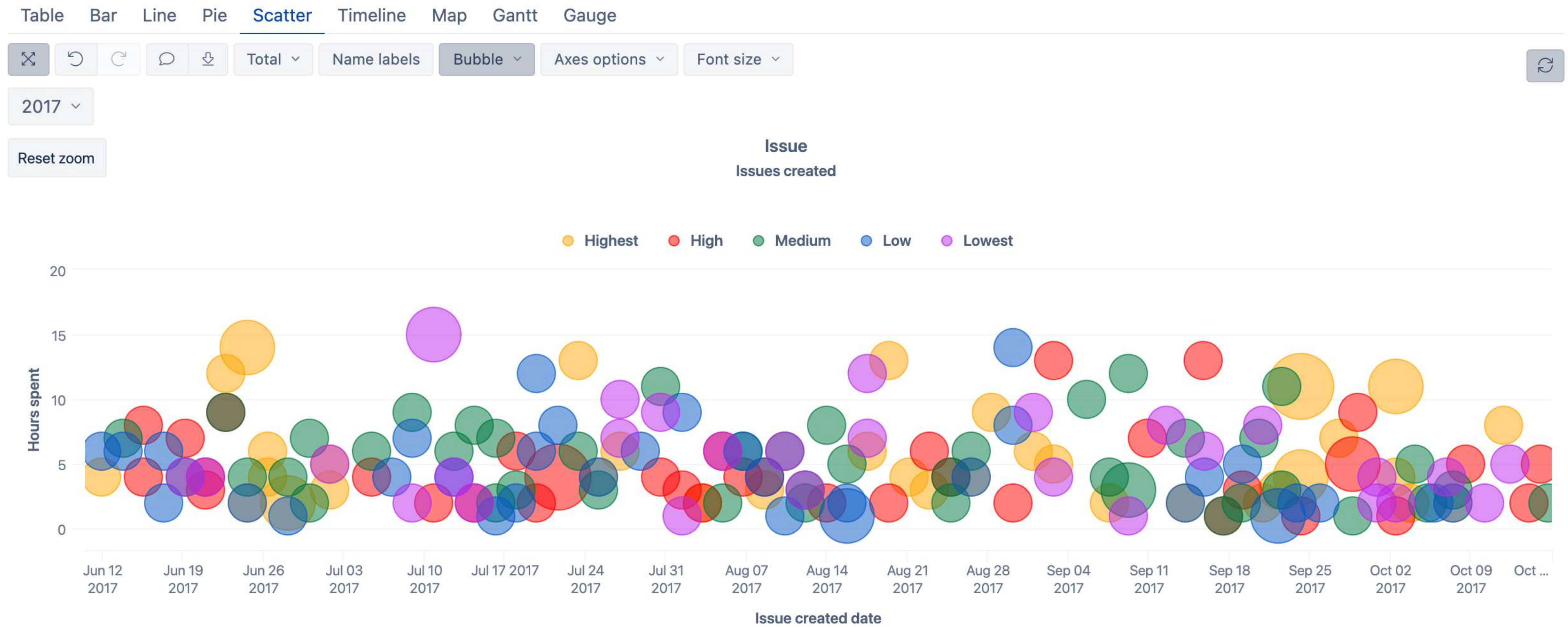
# Yayoi Kusama



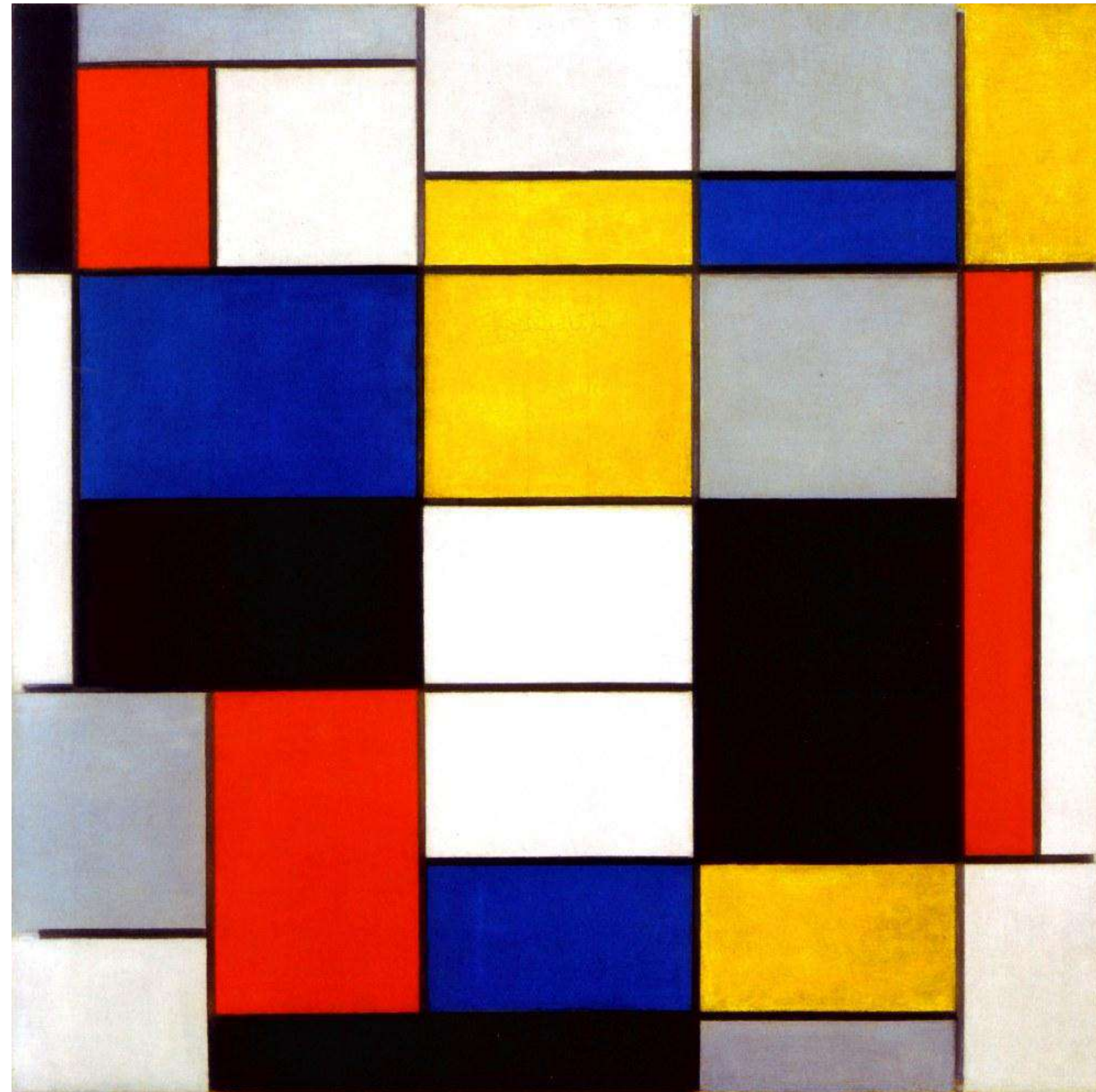
Yayoi Kusama, installation view of *The Obliteration Room* at the Art Gallery of Ontario, 2018.



# Yayoi Kusama inspired

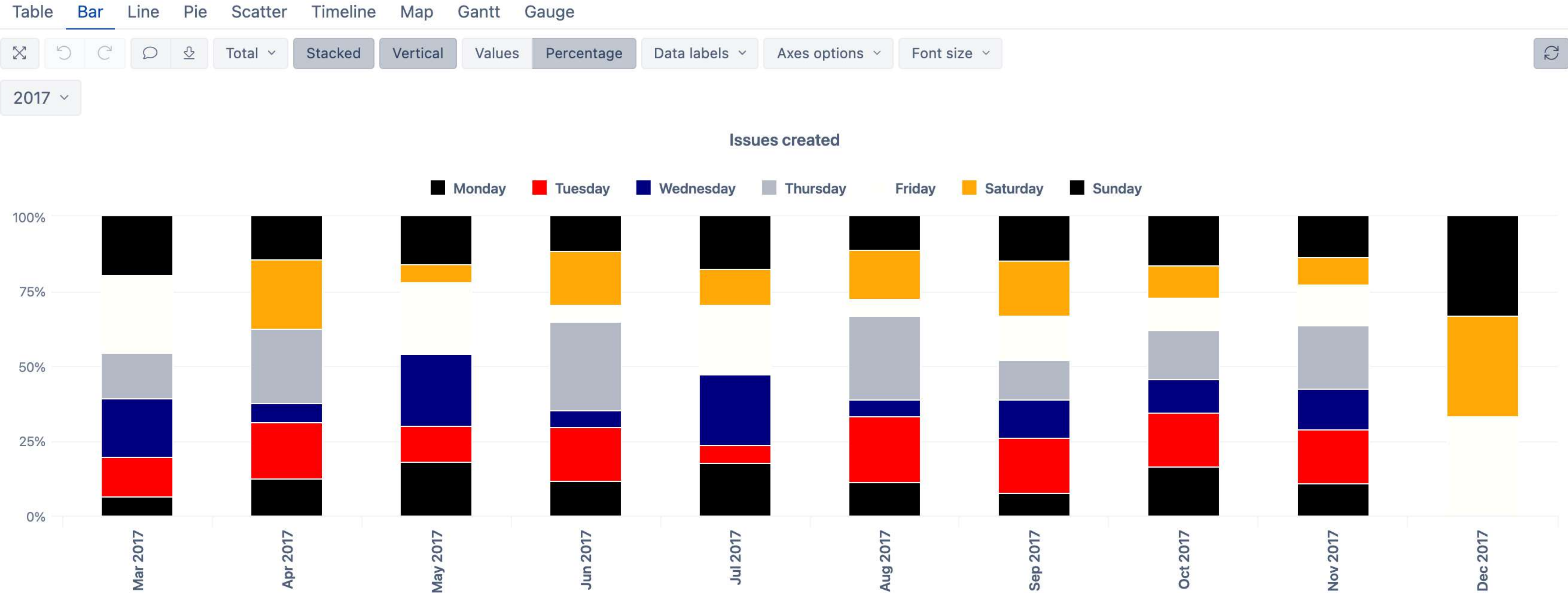


# Piet Mondrian

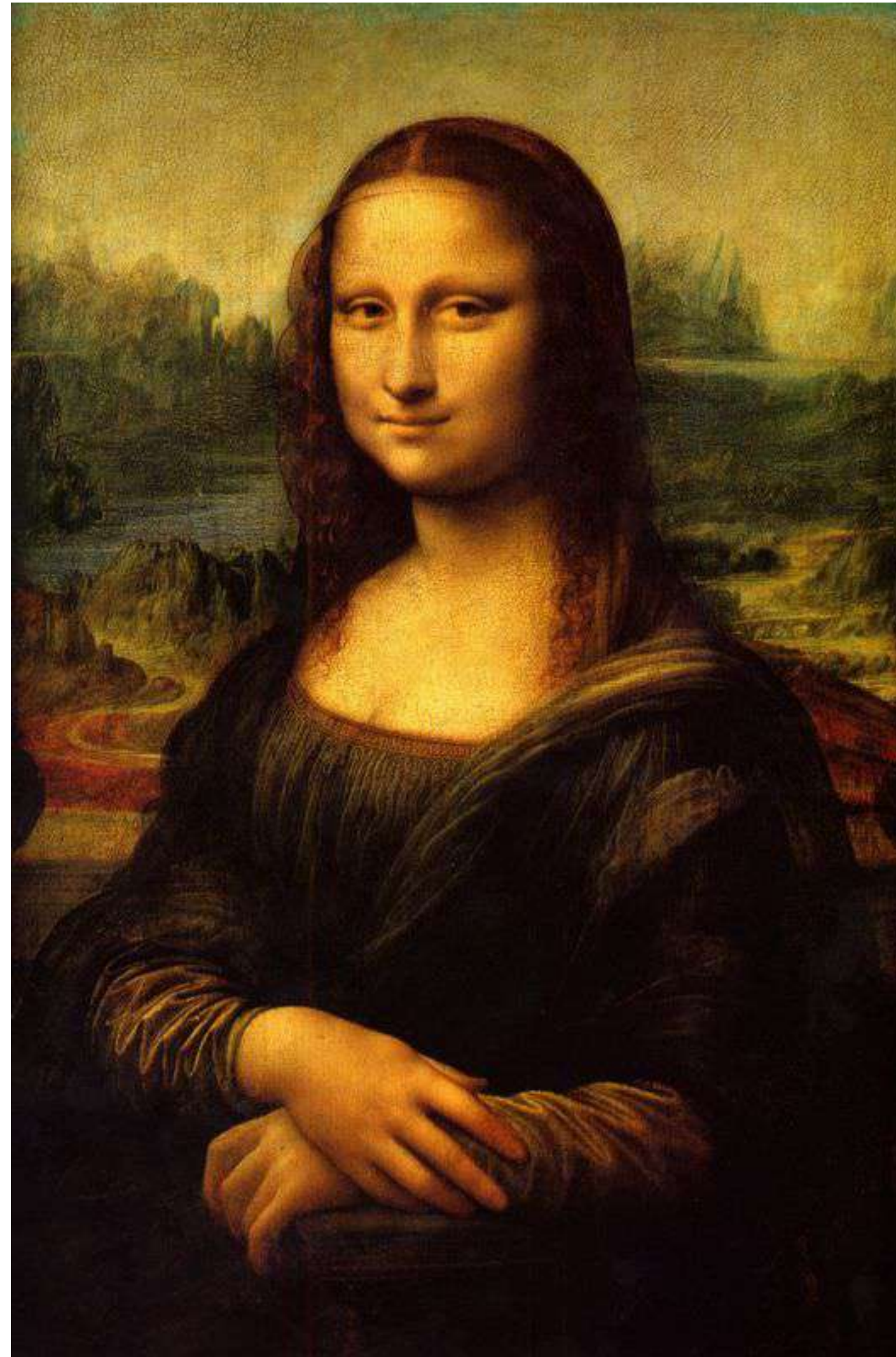




# Piet Mondrian inspired

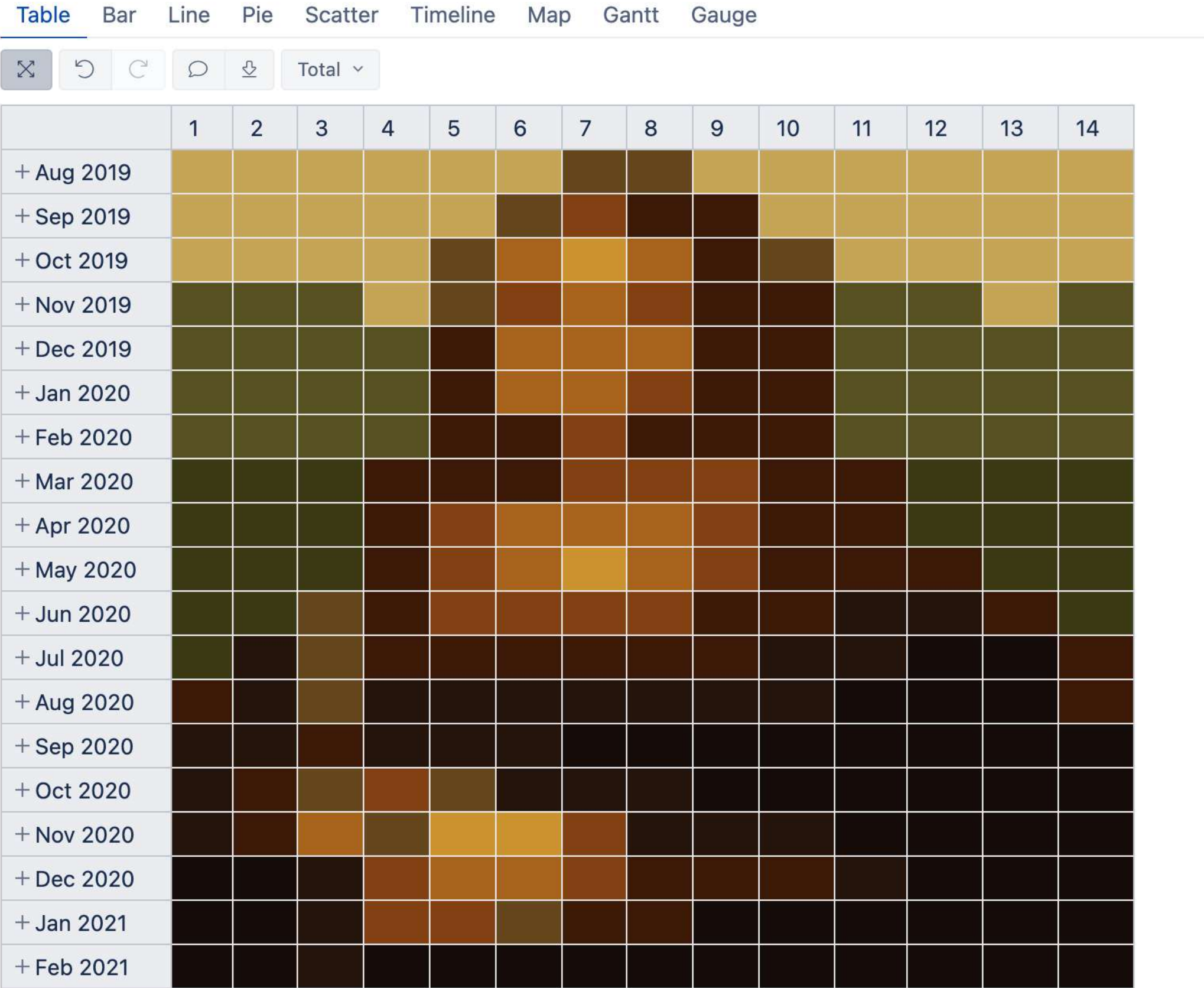


# Leonardo da Vinci





# Leonardo da Vinci inspired





# Art in reporting

⌵ 📅 Hours spent

	Hours spent				
	Highest	High	Medium	Low	Lowest
+ Sep 2018					
+ Jan 2019	36.00		5.00	17.00	19.00
+ Feb 2019	16.00	4.00	58.00	31.00	25.00
+ Mar 2019	55.00	32.00	58.00	13.00	26.00
+ Apr 2019	43.00	35.00	64.00	51.00	9.00
+ May 2019	40.00	31.00	73.00	34.00	24.00
+ Jun 2019	43.00	34.00	49.00	54.00	11.00
+ Jul 2019	34.00	26.00	52.00	56.00	24.00
+ Aug 2019	43.00	32.00	62.00	40.00	83.00
+ Sep 2019	67.00	50.00	36.00	14.00	22.00
+ Oct 2019	21.00	39.00	14.00	39.00	41.00
+ Nov 2019	33.00	15.00	38.00	16.00	24.00
+ Dec 2019	26.00	26.00	27.00	18.00	40.00
+ Jan 2020	51.00	12.00	28.00	46.00	32.00
+ Feb 2020	30.50	20.00	18.00	15.00	12.00
+ Mar 2020	33.00	38.00	41.00	15.00	15.00
+ Apr 2020	37.00	32.00	4.00	38.00	21.00
+ May 2020	5.00	2.00		11.00	
+ Jun 2020					
+ Jul 2020					
+ Aug 2020					
+ Oct 2020					
+ Dec 2020					
+ Mar 2021	257.00	89.00	57.00	53.00	21.00
+ Apr 2021					

⌵ 📅 Hours spent min/max

	Hours spent				
	Highest	High	Medium	Low	Lowest
+ Sep 2018					
+ Jan 2019	36.00		5.00	17.00	19.00
+ Feb 2019	16.00	4.00	58.00	31.00	25.00
+ Mar 2019	55.00	32.00	58.00	13.00	26.00
+ Apr 2019	43.00	35.00	64.00	51.00	9.00
+ May 2019	40.00	31.00	73.00	34.00	24.00
+ Jun 2019	43.00	34.00	49.00	54.00	11.00
+ Jul 2019	34.00	26.00	52.00	56.00	24.00
+ Aug 2019	43.00	32.00	62.00	40.00	83.00
+ Sep 2019	67.00	50.00	36.00	14.00	22.00
+ Oct 2019	21.00	39.00	14.00	39.00	41.00
+ Nov 2019	33.00	15.00	38.00	16.00	24.00
+ Dec 2019	26.00	26.00	27.00	18.00	40.00
+ Jan 2020	51.00	12.00	28.00	46.00	32.00
+ Feb 2020	30.50	20.00	18.00	15.00	12.00
+ Mar 2020	33.00	38.00	41.00	15.00	15.00
+ Apr 2020	37.00	32.00	4.00	38.00	21.00
+ May 2020	5.00	2.00		11.00	
+ Jun 2020					
+ Jul 2020					
+ Aug 2020					
+ Oct 2020					
+ Dec 2020					
+ Mar 2021	257.00	89.00	57.00	53.00	21.00
+ Apr 2021					



# Visual tools in eazyBI



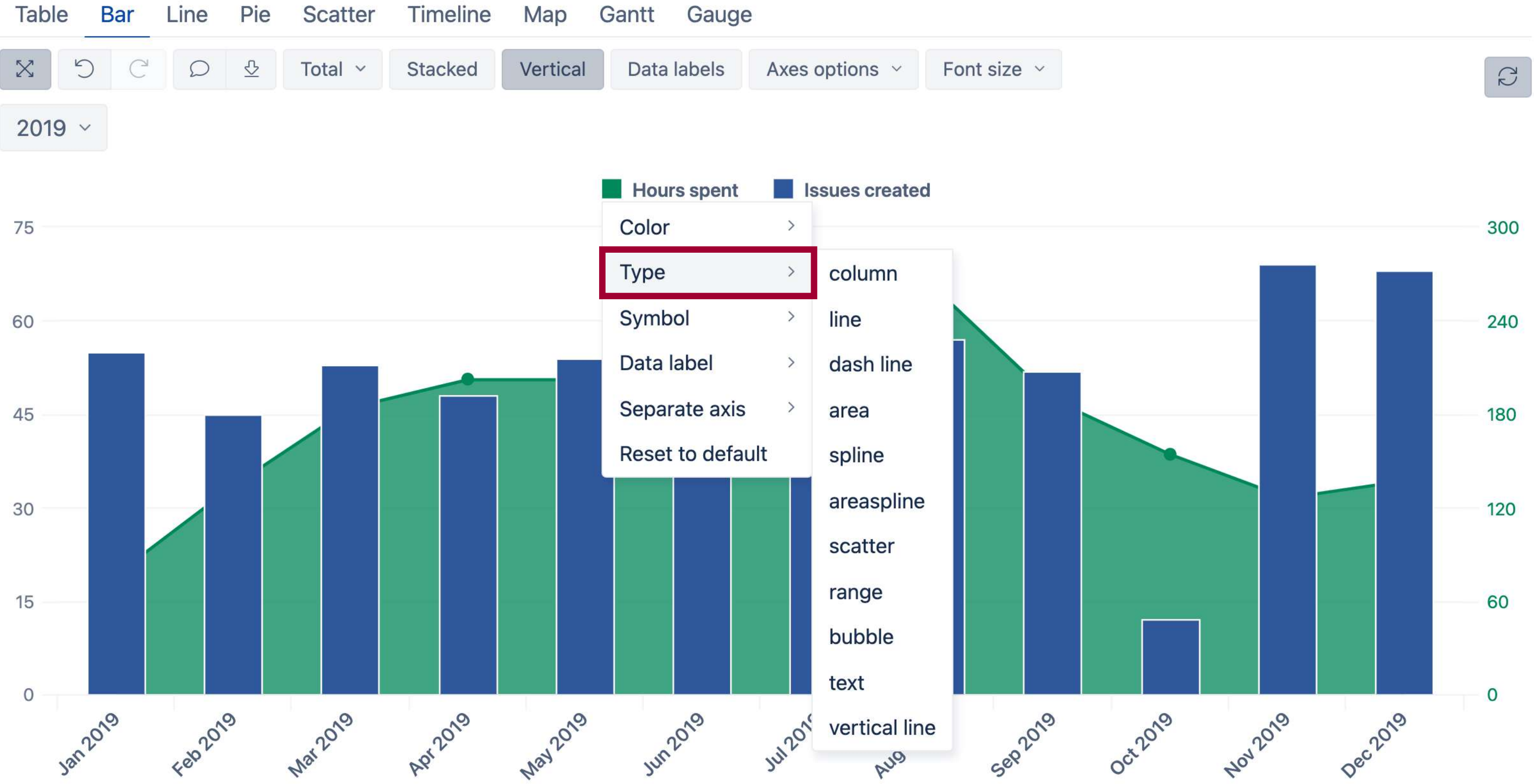
# Tools

## Different charts

Change colors

Measure  
formatting

Conditional cell  
formatting





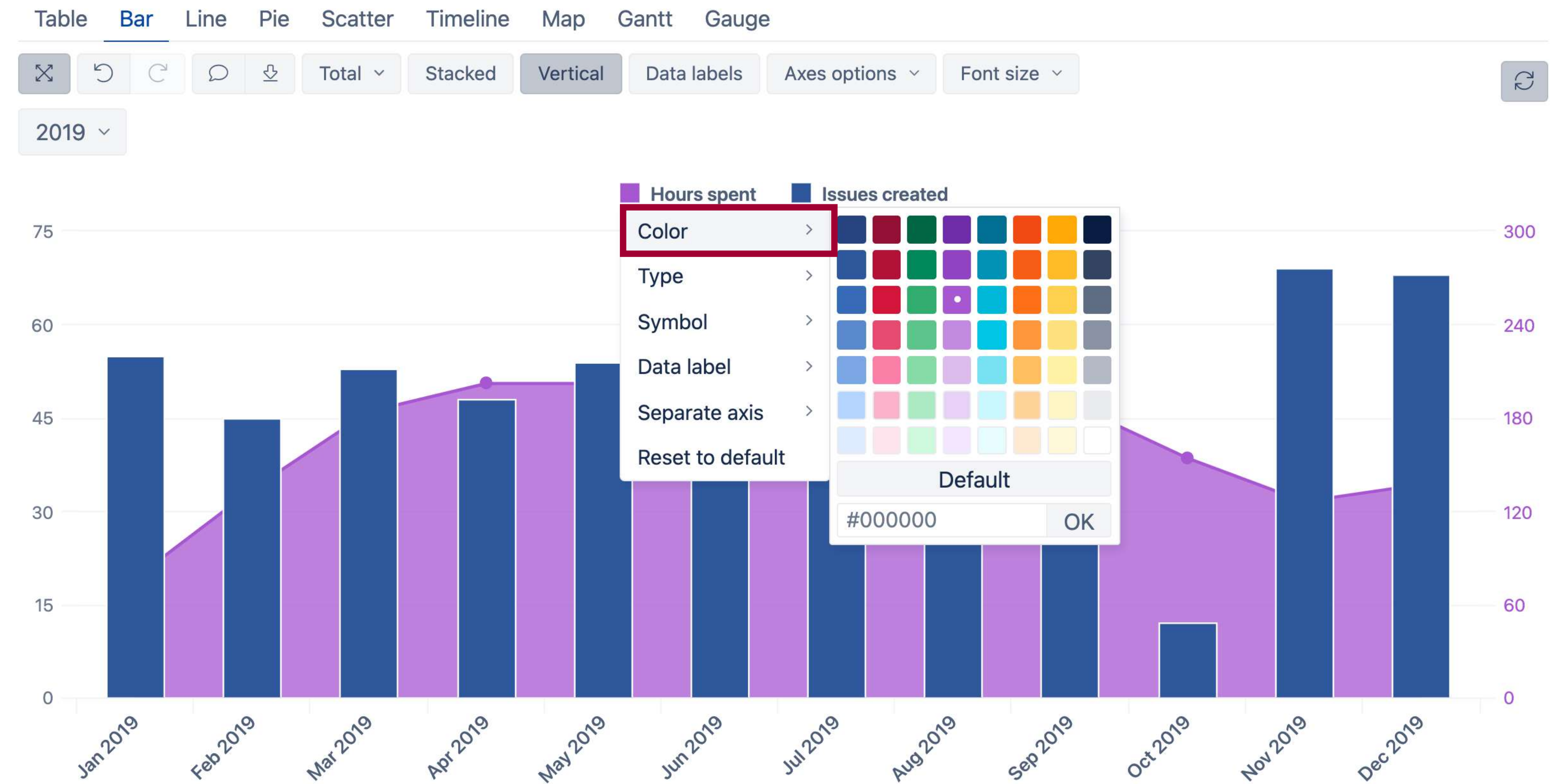
# Tools

Different charts

Change colors

Measure  
formatting

Conditional cell  
formatting





# Tools

Different charts

Change colors

Measure  
formatting

Conditional cell  
formatting

Define report specific calculated member formula

[Measures].[Project icon] =

```
1 CASE [Project].CurrentMember.Name
2   WHEN "DEMO Alpha" THEN
3     "<i class='far fa-ghost' style='color:green;font-size:20px;disp
4   WHEN "DEMO Beta" THEN
5     "<i class='far fa-rocket' style='color:#a232e3;font-size:20px;d
6   WHEN "DEMO Gamma" THEN
7     "<i class='far fa-robot' style='color:#32a8e3;font-size:20px;di
8 END
```

Formatting

Markdown

Read [calculated members tutorial](#) to learn about calculated member formulas. You can select members, operators and frequently used functions from sidebar to insert them into calculated member formula.

Root members

Issues created

Issues due

Issues resolved

Issues closed

Issues with due date

Issues last updated

Original estimated hours

Remaining estimated hours

Issues created count

Issues due count

Issues resolved count

Issues closed count




Hours spent

Issues with hours spent

Update

Delete

cancel

	icon	spent	created
+ DEMO Alpha		1,351.50	321
+ DEMO Beta		858.00	318
+ DEMO Gamma		872.00	320

# Tools

Different charts

Change colors

Measure  
formatting

Conditional cell  
formatting

TableBarLinePieScatterTimelineMapGanttGantt

Story2019

	Hours spent	Issues created
+ Jan 2019	63.00	
+ Feb 2019	78.00	
+ Mar 2019	117.00	
+ Apr 2019	141.00	
+ May 2019	137.00	
+ Jun 2019	117.00	
+ Jul 2019	156.00	
+ Aug 2019	222.00	
+ Sep 2019	132.00	
+ Oct 2019	75.00	
+ Nov 2019	86.00	
+ Dec 2019	94.00	

Cell formatting for:Issues createdCustom formula

RangeExact valueRegular expressionTop/BottomHeatmap

	Value	Background
Minimum	Lowest value	
Midpoint	Middle value	Default
Maximum	Highest value	

Leave empty for default values or specify exact limits for the heatmap color scale.

☐ Apply to all row cells

ApplyClear allcancel



# Use cases for Jira

Visualization options

# Use Case

---

**Most active days**

Time tracking

Last period  
overview

Risk matrix

**As a support team manager, I  
want to see when are the most  
active days per week by issues  
resolved**



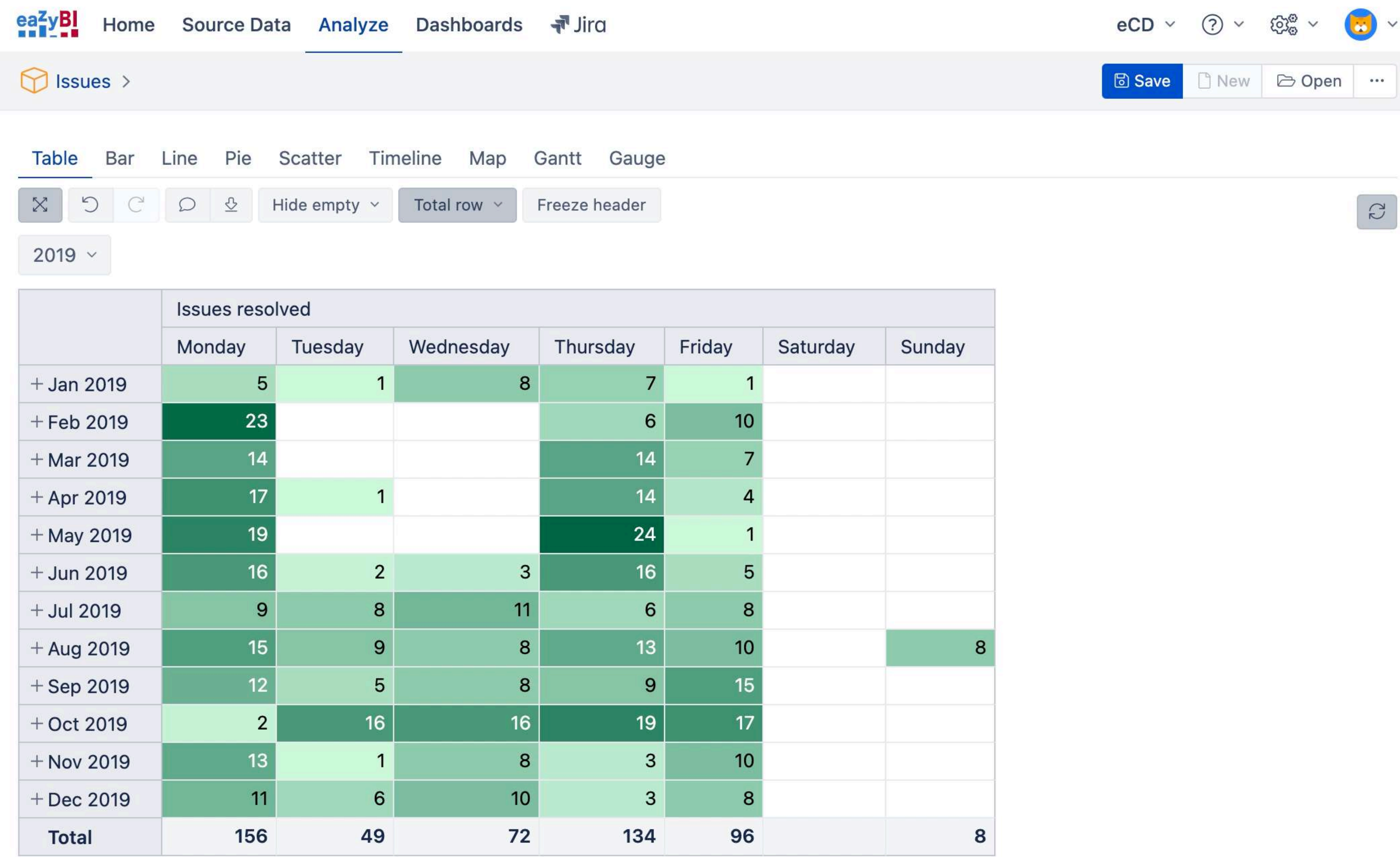
# Use Case

Most active days

Time tracking

Last period  
overview

Risk matrix



## Use Case

---

Most active days

### Time tracking

Last period  
overview

Risk matrix

**As a team lead, I want to see an overview of my team time tracking and see if all have logged the hours**



Use Case

Most active days

Time tracking

Last period  
overview

Risk matrix

eaZyBI

HomeSource DataAnalyzeDashboardsJira

eCD ? ⚙️ 🐱

Issues >SaveNewOpen...

Show available dimensions

Pages

> Logged by

> Time

Rows

Nonempty

> Logged by

Columns

> Measures

> Time

TableBarLinePieScatterTimelineMapGanttGauge

🗨️ ↺ ↻ 💬 ⬇️ Total ▾

All Users ▾Previous week ▾

	Hours spent					Total
	Mar 15 2021	Mar 16 2021	Mar 17 2021	Mar 18 2021	Mar 19 2021	
Adam Mint	8.00	7.00	9.00	3.00	12.00	39.00
Anna Linda	27.00	6.00	4.00	5.00	7.00	49.00
David Sand	7.00	6.00	8.00	9.00	10.00	40.00
Duncan Snow	8.00	8.00	7.00	9.00	7.00	39.00
Monica Walker	5.00	6.00	6.00	2.00	8.00	27.00
Patrick Lewis	13.00	10.00	1.00	3.00	13.00	40.00
Sandra Adams	8.00	8.00	8.00	8.00	8.00	40.00
Steve Davis	40.00					40.00
Total	116.00	51.00	43.00	39.00	65.00	314.00

## Use Case

---

Most active days

Time tracking

**Last period  
overview**

Risk matrix

**As a product owner, I want to  
see an overview of stories  
created over time per priority**



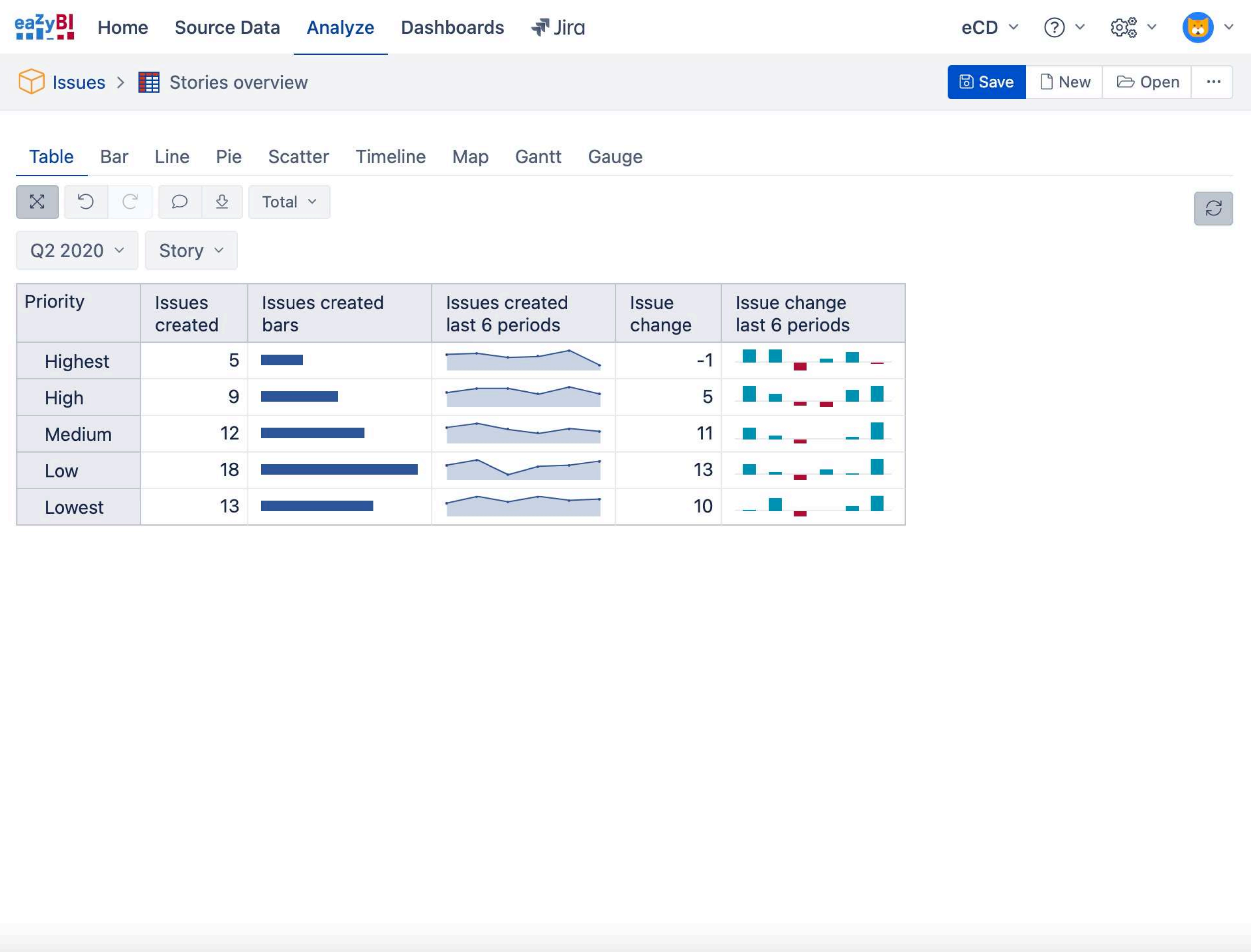
# Use Case

Most active days

Time tracking

Last period  
overview

Risk matrix



## Use Case

---

Most active days

Time tracking

Last period  
overview

**Risk matrix**

**As a project manager, I want to  
see a risk matrix that is colored  
based on status and priority  
value combination**



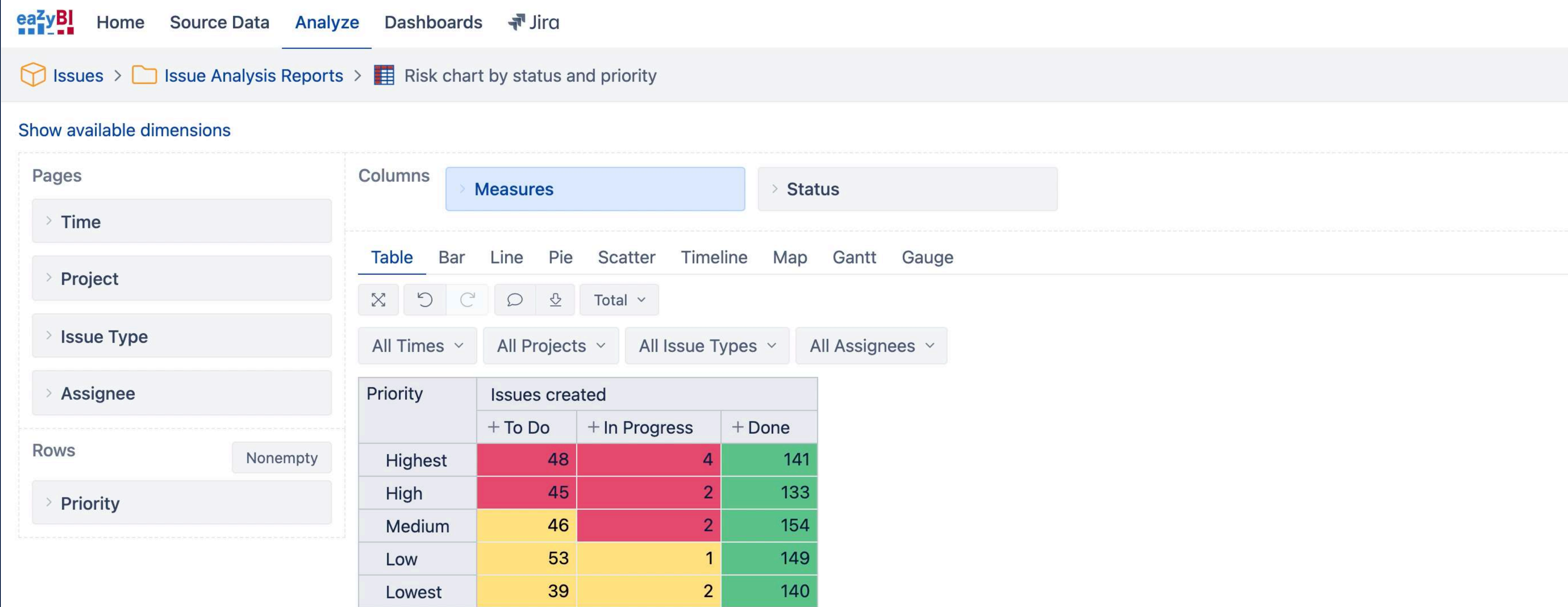
Use Case

Most active days

Time tracking

Last period  
overview

Risk matrix



# Use cases for Confluence

Visualization options



## Use Case

---

Pages updated

Content health

Confluence tasks

**As a documentation owner, I want to keep track of popular but potentially outdated documentation pages**

# Use Case

## Pages updated

## Content health

## Confluence tasks

eaZyBI

Analyze

Dashboards

Confluence

Confluence

Save

New

Open

Table

Bar

Line

Pie

Scatter

Timeline

Map

Gantt

Gauge

Bottom 40 by Page updated date

All others

Total

Freeze header

eaZyBI

All Page Types

All Labels

All Authors

(anonymous)

Last 30 days

Page	Page views	Page updated date
ExtractString	277	Nov 07 2013
PrevMember	139	Jan 15 2014
DateSerial	178	Jul 02 2015
StartDate	167	Jul 15 2015
CascadingChildrenSet	137	Dec 11 2015
Item	131	Aug 27 2016
DefaultContext	176	Aug 27 2016
AnyDateInPeriod	189	Sep 25 2017
Round	143	Dec 01 2017
DateDiffWorkdays	320	Dec 27 2017
Set Up and Administer	408	Jul 19 2018
Zendesk advanced settings	141	Jul 30 2018
Delete Account	191	Aug 16 2018
Data Import	784	Aug 16 2018
Zendesk box plot chart	117	Aug 16 2018
Analyze and Visualize	691	Aug 16 2018



## Use Case

---

Pages updated

Content health

Confluence tasks

**As a technical writer I want to  
see attachments in Confluence  
based on their size, version  
count and type**

# Use Case

Pages updated

Content health

Confluence tasks

Table Bar Line Pie Scatter Timeline Map Gantt Gauge

Top 20 by Page attachments size All others Total Freeze header

All Space Categories All Spaces All Pages All Page Types All Labels

Attachment	Page attachments size	Attachment version number	Attachment media type
googlechrome.dmg	78.01 MB	1	application/octet-stream
AU_s1ep2_20200309-2.key	67.02 MB	1	application/octet-stream
VID-20200418-WA0025.mp4	4.62 MB	1	video/mp4
CS-1D-6-12-KG.pdf	1.10 MB	1	application/pdf
_DSF3533.jpg	1.00 MB	1	image/jpeg
20180501_121709.jpg	686 KB	2	image/jpeg
20180719_141000.jpg	675 KB	1	image/jpeg
gerda-mini.png	634 KB	6	image/png
fullsizeoutput_1-removebg-preview.png	418 KB	1	image/png
20191113_081003.jpg	366 KB	1	image/jpeg
step-2-image-1.png	325 KB	6	image/png
1.3.jpg	253 KB	5	image/jpeg
1.3.jpg	253 KB	2	image/jpeg
2.2.jpg	237 KB	5	image/jpeg
2.2.jpg	237 KB	2	image/jpeg
2.1.jpg	236 KB	5	image/jpeg
2.1.jpg	236 KB	2	image/jpeg
2.3.jpg	215 KB	5	image/jpeg



## Use Case

---

Pages updated

Content health

Confluence tasks

**As a marketing team manager,  
I want to see the status  
overview of all tasks from  
Confluence**



# Use Case

Pages updated

Content health

# Confluence tasks

eaZyBI

HomeSource DataAnalyzeDashboardsConfluence

Confluence

SaveNewOpen

TableBarLinePieScatterTimelineMapGanttGauge

Total row

Freeze header

DemonstrationAll Task StatusesAll Task Assignees

Task	Task completion status	Task status	Task assignee	Task created date	Task due date	Task completed date	Tasks created	Tasks completed
Review feedback: @Mārtiņš Vanags with colleague @Zane Baranovska		Uncompleted	Mārtiņš Vanags	Apr 29 2020			1	
Maybe we need a separate dashboard to represent all chart types @Zane Baranovska		Uncompleted	Zane Baranovska	Oct 29 2020			1	
Update video links for Core documentation @Zane Baranovska		Uncompleted	Zane Baranovska	Oct 13 2020			1	
Find very good uses-cases @Mārtiņš Vanags until 2020-04-28		Completed	Mārtiņš Vanags	Apr 29 2020	Apr 28 2020	Apr 29 2020	1	1
Find very good use-cases @Mārtiņš Vanagsuntil 2020-04-28		Completed	Mārtiņš Vanags	May 12 2020	Apr 28 2020	Oct 13 2020	1	1
Discuss use-cases: @Mārtiņš Vanags with colleague @Zane Baranovskauntil 2020-04-30		Completed	Mārtiņš Vanags	Apr 29 2020	Apr 30 2020	Apr 29 2020	1	1
Prepare for demonstrations @Mārtiņš Vanags until 2020-05-06		Uncompleted	Mārtiņš Vanags	Apr 29 2020	May 06 2020		1	
@Zane Baranovska prepare documentation on new Confluence Features 2020-05-08		Completed	Zane Baranovska	May 12 2020	May 08 2020	May 12 2020	1	1
@Zane Baranovska prepare Attachment report templates for the Demo account 2020-05-13		Uncompleted	Zane Baranovska	Oct 29 2020	May 13 2020		1	
Discuss further videos for Training @Ilze Leite-Apine 2020-06-03		Uncompleted	Ilze Leite-Apine	May 12 2020	Jun 03 2020		1	
Publish use cases on documentation page 2020-06-05 @Mārtiņš Vanags		Uncompleted	Mārtiņš Vanags	Oct 29 2020	Jun 05 2020		1	
@Ilze Leite-Apine Sync vacation calendar for team vacations 2020-08-03		Uncompleted	Ilze Leite-Apine	Nov 05 2020	Aug 03 2020		1	
Prepare a decent halloween mask 2020-10-31 @Mārtiņš Vanags		Uncompleted	Mārtiņš Vanags	Oct 29 2020	Oct 31 2020		1	
Decide who is going to Atlassian Team Tour 2020-11-06		Completed		Nov 23 2020	Nov 06 2020	Nov 23 2020	1	1
@Mārtiņš Vanags Prepare presentation template for catworkx 2020-11-12		Uncompleted	Mārtiņš Vanags	Nov 23 2020	Nov 12 2020		1	
@Zane BaranovskaPrepare use cases for catworkx 2020-11-13		Uncompleted	Zane Baranovska	Nov 23 2020	Nov 13 2020		1	
Demonstrate how eazyBI can import Tasks from Confluence @Mārtiņš Vanagsat 2020-11-19		Completed	Mārtiņš Vanags	Apr 29 2020	Nov 19 2020	Oct 29 2020	1	1
@Gerda Zandersone Create a chart for Advent Calendar 2020-11-29		Uncompleted	Gerda Zandersone	Nov 23 2020	Nov 29 2020		1	



# Markdown + font-awesome

eaZyBI


COMMUNITY DAY 2021

MAY 6, 2021


REGISTER NOW!

## Measure formatting (markdown and custom)


Tips & Tricks



gerda.zandersone

 eazyBI Staff

9



Sep '20

In this article, I will show a few tips and tricks on how it is possible to format the measures.

In eazyBI, there are two interesting ways on how to [format measures](#) <sup>18</sup> to get a different appearance. First is our newest formatting option, **Markdown** (available on **Cloud** and starting from the **eazyBI version 6.1**), and second is a **Custom** format with which you can change the formatting of the measure.

Define calculated member formula

[Measures]

1

[Mea

##### Decimal

##### Integer

####% Decimal percentage

####% Integer percentage

mmm dd yyyy Month Day Year

mmm yyyy Month Year

yyyy-mm-dd ISO format date

yyyy-mm-dd hh:mi:ss Date and time

##d ### ##m Days, hours, minutes

##h ##m Minutes

##h ##m ##s Seconds

Bytes

Markdown

custom

Formatting ✓ default

Read calculated members tutorial to learn about calculated member formulas. You can select members, operators and frequently used functions from sidebar to insert them into calculated member formula.

Create

cancel

Root members

Issues created

Issues due

Issues resolved

Issues closed

Issues with due date

Issues last updated

Original estimated hours

Remaining estimated hours

Issues created count

Issues due count

Issues resolved count

Issues closed count

Hours spent

Issues with hours spent



Sep 2020

1 / 10

Sep 2020

Jan 29





### Markdown

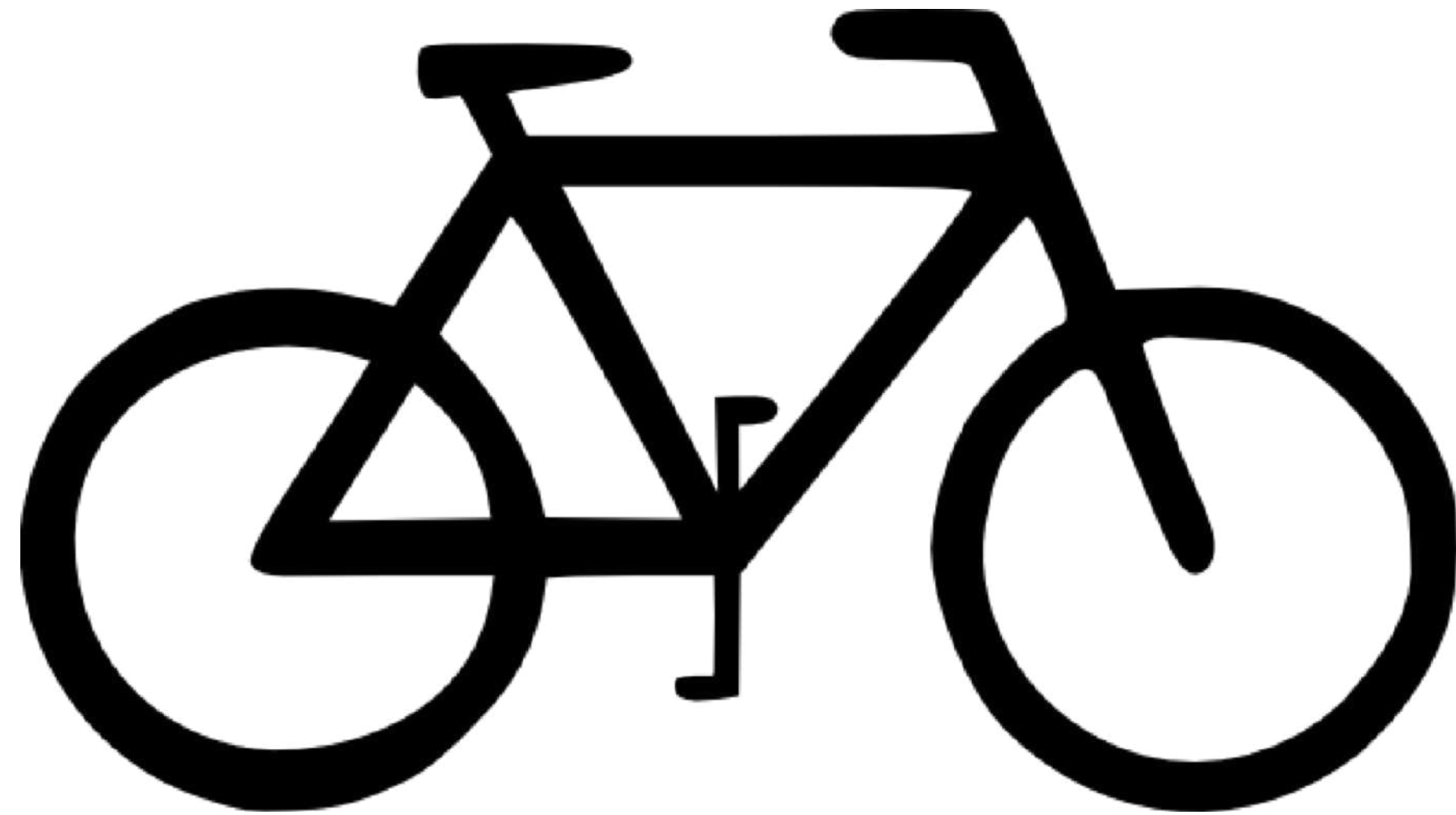
You can use [Markdown](#) <sup>26</sup> formatting to show a rich text (bold, italic) or clickable URL links. Also, you can use HTML for more advanced formatting, e.g., show an icon or image as a measure. As eazyBI uses [font-awesome](#) <sup>34</sup> icons, it is possible to refer to them in calculated measures or in report/dashboard description when using markdown formatting. Check out a few examples.

#### Example 1, Issues resolved (check)

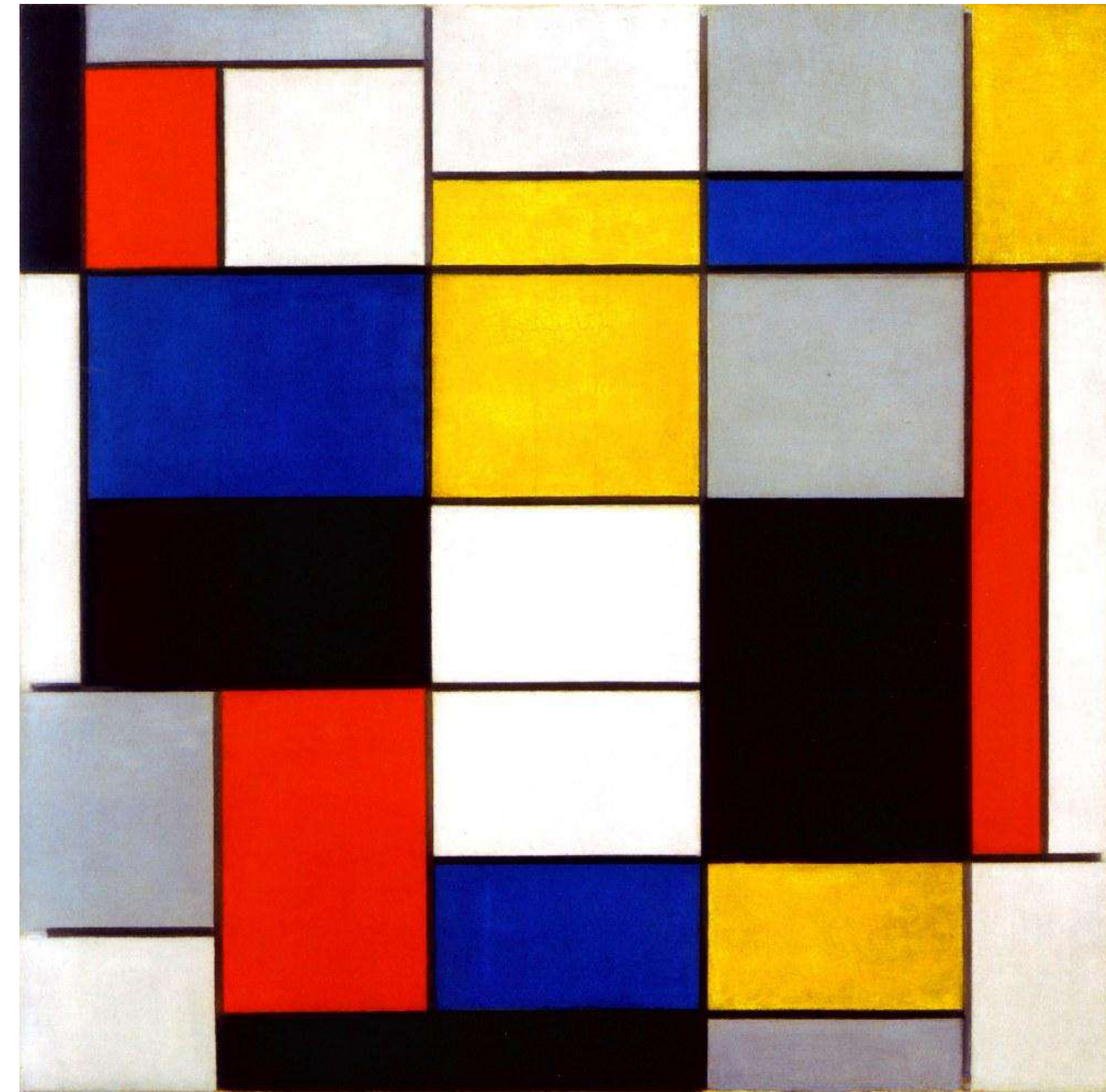
This measure returns for **Year** level where issues are resolved a green check, which is a bit bigger (increased font size) than checks in below levels where issues also are resolved.



# Bicycle + Inspiration



+





A stylized world map in shades of blue and purple, with a network of white dotted lines connecting various global locations. The text "Thank you!" is centered over the map.

**Thank you!**